



## DAILY NEWS FOOD DRIVE

### Getting Ready for your Food Drive Pickup

Thank you for collecting food for the *Daily News Food Drive* running from **Tuesday, October 20, 2020 through Friday, January 22, 2021**.  
Your support will help City Harvest reach our goal of collecting one million pounds of food.

1. Pack your donations in sturdy boxes weighing no more than 50 lbs. for safe lifting (see below images for reference).
2. On the day of pickup, have your collection boxes at the street level or accessible via elevator with no steps or stairs in the way so our driver can safely maneuver the hand truck.
3. Make sure that you're onsite during the agreed upon pickup window, and feel free to give our driver a hand loading the truck when they arrive.

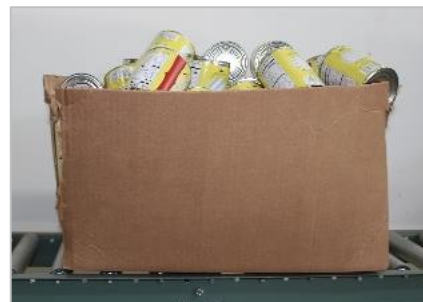
Thank you again for your support!

#### How to pack your donation boxes



**Image 1.** Fully packed food drive box.  
Box dimensions: 19x13x11. No more than 50 pounds.

#### How *not* to pack your donation boxes



**Image 2.** The box is filled past the folding flaps, and is ripped, making it likely to break when lifted, and causing the cans to fall out.

